

# Case Study: Kier Construction Eastern HQ, Cambridge

081/Feb17



## Main contractor specifies Kawneer glazing systems for its own building

Kawneer curtain wall, window and door systems were used on Kier Construction Eastern's £6.5 million new headquarters, Building 3000, on a greenfield site on Cambridge Research Park. The systems were selected because they provided a better quality product backed with better technical support.

**Building:** Kier Construction Eastern HQ

**Location:** Cambridge

**Architect:** RHP

**Main Contractor:** Kier Construction Eastern

**Installer:** Elliston Steady & Hawes (Aluminium) Ltd

[WWW.KAWNEER.CO.UK](http://WWW.KAWNEER.CO.UK)

 **KAWNEER**  
AN ARCONIC COMPANY

## Kawneer systems on a new Kier Construction office

Kawneer's AA®100 zone-drained curtain walling with 50mm sightlines was used for high-level ribbon windows in the east masonry elevation of main contractor Kier Construction Eastern's new headquarters on Cambridge Research Park.

This was complemented by Kawneer's AA®540 fixed lights on the ground and first floors of the east elevation and by Kawneer's AA®110 zone-drained curtain walling with 65mm sightlines for three-storey screens between terracotta-tiled facades on the western façade. Also by AA®720FR (fire-rated) doors and series 190 heavy-duty commercial entrance doors.

Designed by RHP architects to a design code identified within the outline planning permission for Cambridge Research Park, the steel-framed building is occupied by Kier on the first and second floors, with the ground floor available for let.

Briefed to provide a 3,000m<sup>2</sup> Grade A office block that could be sub-let in 1,000m<sup>2</sup> lets if required, RHP designed Building 3000 to complement the existing structures on the research park, with a buff brick and terracotta palette. It is also BREEAM "Very Good" rated.

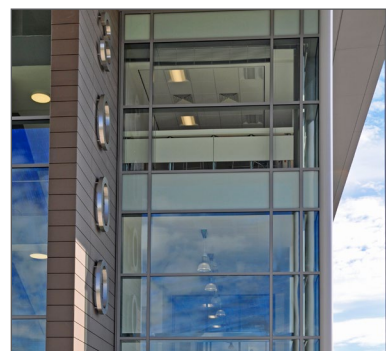
Orientated north south and arranged so the conference and board room areas have impressive views over the central lake, the open plan areas are well lit with the large Kawneer windows on both sides. An efficient core strategy provides a net to gross ratio of over 85%.

Benjamin Adams, design manager for Kier Construction Eastern, said the Kawneer systems were specified as they were "deemed a better product with superior technical back-up than some of the alternatives." They were installed by specialist sub-contractor Elliston Steady & Hawes (Aluminium) Ltd.

He added: "Curtain walling plays an integral part in the architectural features of the building. Natural light within an office space is fundamental to a good working environment which is why a sizeable portion of the external façade is glazed. The specification of glazing was also important to issues of overheating as a result of solar gain."

Matthew Watling, project manager for Kier Construction Eastern, also added that aluminium's sustainability credentials "assisted with gaining BREEAM credits in the materials section."

He said: "The Kawneer systems complied well with the air permeability test requirements. The window frames were strapped back to the SFS framing due to the large depth of the cavity between the SFS and the masonry. We used steel plates to bridge the gap and provide support for the ribbon windows on the second floor."



Please contact our Architectural Services Team if you have a project you would like to discuss: Tel: 01928 502604 / Email: [kawneerAST@arconic.com](mailto:kawneerAST@arconic.com)

Kawneer UK Limited, Astmoor Road, Astmoor Industrial Estate, Runcorn, Cheshire WA7 1QQ  
Tel: + 44 (0)1928 502500 Fax: + 44 (0)1928 502501

[WWW.KAWNEER.CO.UK](http://WWW.KAWNEER.CO.UK)